





## 41 Linkscroft Avenue, Ashford, TW15 2BQ

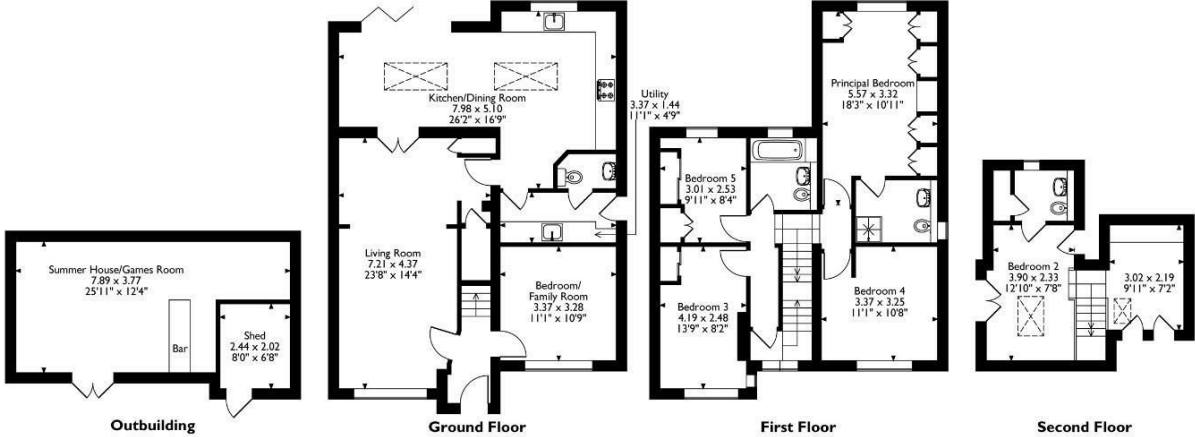
Situated on a generous corner plot and within a short walk of the town centre, mainline station and Ashford's most sought-after schools, this impressive five-bedroom family home has been recently refurbished to an exceptionally high standard throughout. Offering versatile and well-balanced accommodation, the property features three spacious reception rooms, a high-quality fitted kitchen, separate utility room and a convenient downstairs W.C., making it ideal for modern family living.

Arranged over three floors, the upper levels provide five well-proportioned bedrooms and two contemporary bathrooms, ensuring ample space for growing families or those needing home office accommodation. Externally, the property benefits from its own driveway and a large rear garden, complete with an impressive 25ft summer house/games room, perfect for entertaining or leisure use. Deceptively spacious and beautifully presented, this outstanding home must be viewed internally to be fully appreciated. Please call Ashford's leading estate agents, Aspen on 01784 252202.



Floor Plan

41, Linkscroft Avenue, Ashford, Surrey  
Approximate Gross Internal Area  
Main House = 168 Sq M/1809 Sq Ft  
Outbuilding = 31 Sq M/334 Sq Ft  
Total = 199 Sq M/2143 Sq Ft



Please note that the location of doors, windows and other items are approximate and this floorplan is to be used for illustrative purposes only. Unauthorized reproduction is prohibited.



Features



